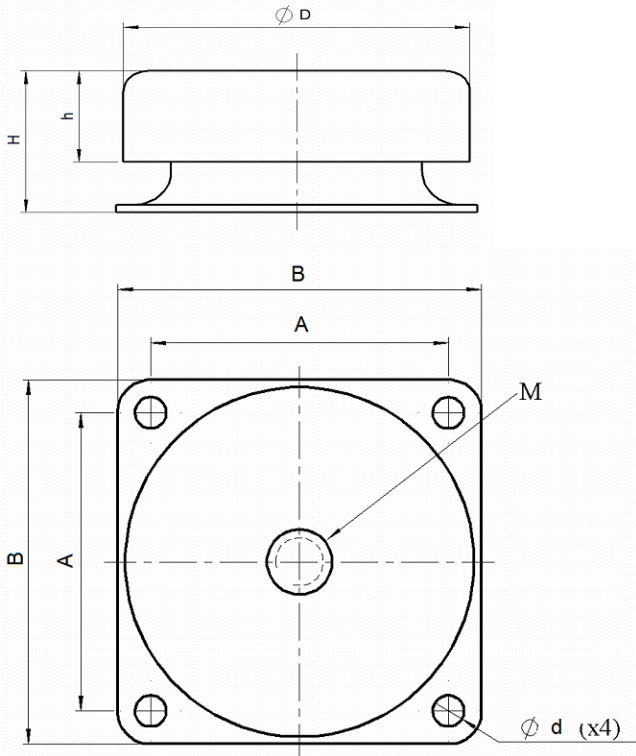
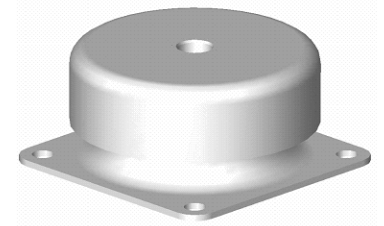


GAMMACUP Series



Construction

The standard execution is proposed with metal parts in galvanized steel and elastic components made in rubber with high mechanical properties and very good resistance to Oil, Ozone Sunlight aging and Heat aging and low creeping under static load

The construction is fail-safe

The C 1000 size is available in high damped silicone

Applications

Insulation of railroad equipments, pumps, motors, machinery, mounted on carrier or on fixed stations, with a good protection against severe shock and with efficient vibration damping from 40 Hz

| P/N | Dimensions | | | | | | | | Mass Kg |
|--------|------------|-----|-----|------|-----------|---------------------|----|----|------------|
| | A | B | D | d | M | Tapped hole deep | H | h | |
| C 1000 | 49,5 | 60 | 58 | 5,2 | M6 (M8) | 20 | 28 | 18 | 0,200 |
| C 2000 | 63,5 | 76 | 76 | 6,4 | M10 (M12) | 30 | 38 | 25 | 0,450 |
| C 4000 | 108 | 133 | 124 | 11,9 | M16 | 19 | 63 | 38 | 1,800 |
| C 3000 | 143 | 175 | 168 | 13,5 | M16 | 65 | 90 | 59 | 4,500 |

Designation – Codification

The reference to be indicated for these dampers is : C [A][XXX]-M[Y]-[I], with

[A] : 1,2,3 or 4 size of isolator

[XXX] : Load range table

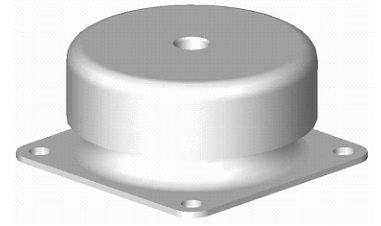
[Y] : Execution of tapped hole

[I] : Elastomers material identification, without means in neoprene and HDS in silicone

Example : C 1010-M8-HDS : Size 1000 – Max load 16 Kg – Tap M8 –Silicone rubber



GAMMACUP Series



Characteristics

Input vibration level can reach $\pm 0,6mm$ for isolators size C 1000 and for resonance frequency from 15Hz

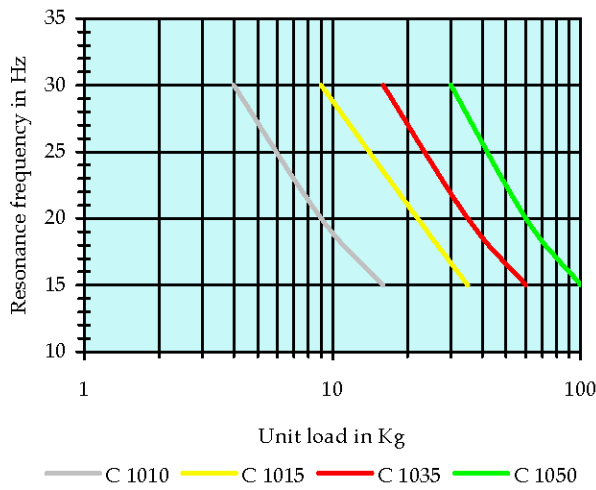
Same behaviour in all directions

All attitude mount

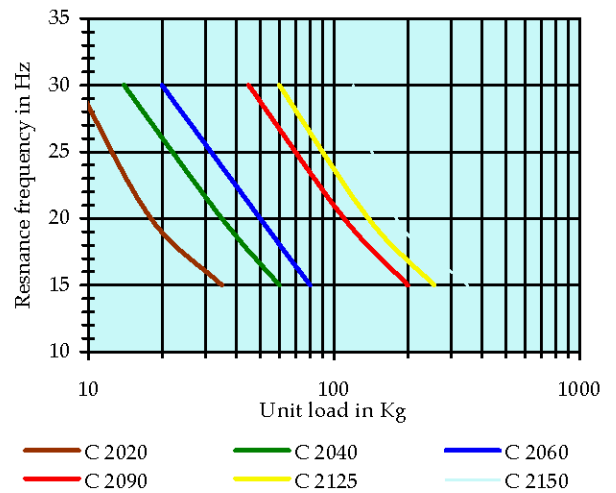
Operative temperature range from $-30^{\circ}C$ to $+80^{\circ}C$ in standard range in neoprene

And from $-55^{\circ}C$ to $+150^{\circ}C$ for execution in high damped silicone (size C 1000)

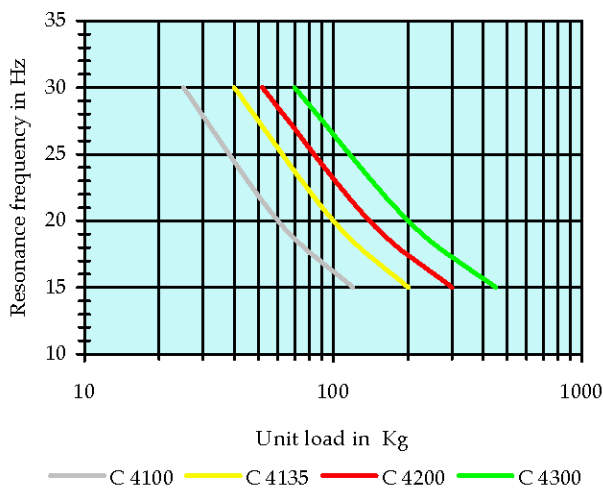
Load range under +/- 0,4mm



Load range under +/- 0,4mm



Load range under +/- 0,4mm



Load range under +/- 0,4mm

