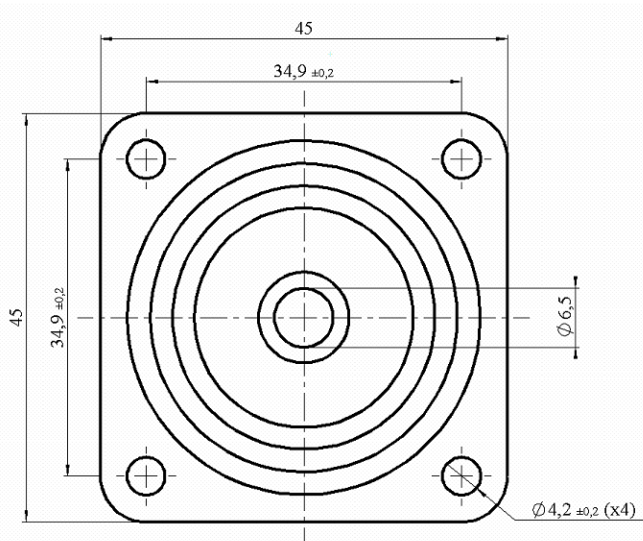
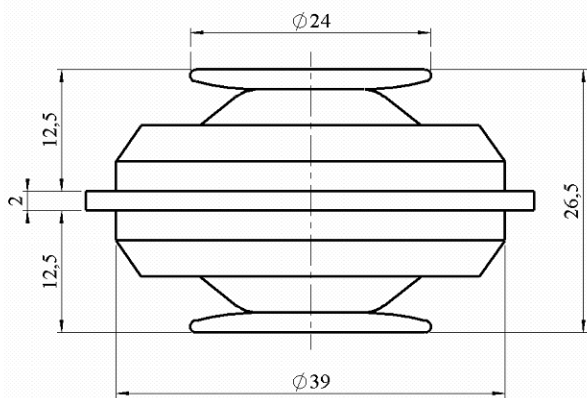
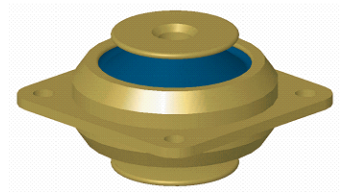


# SES 4 Series



### Construction

The SES 4 series dampers are made of elastic components mounted in opposite in order to allow an all attitude working possibility , with almost the same behaviour in all positions

This will also allow to accept high dynamic input levels at resonance and reach a amplification factor lower than 4 ( $Q_{max} < 7$ )

Their construction is fail-safe

Approximate weight of damper : 80 grams

### Applications

This dampers are suitable for realisation of insulation of materials mounted on board are on fixed stations, with very good vibration shock isolation

### Codification

The reference to be indicated for these dampers is :

SES 4A-[x] or SES 4H-[x]

[x] corresponding to the index of load range

*Particular achievements with specific load range can be proposed, for any request, consult our engineering departments*

### Nato codification:

SES4-A2 : 5340.14.339.7522

SES4-A3 : 5340.14.452.2744

### Characteristics

It is possible to apply the load in all directions

The vibrations levels can reach  $\pm 1mm$  and this for resonance frequencies from 15Hz

The axial to radial frequency factor is 1,15

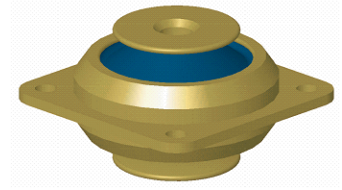
The operative temperature range is from  $-55^{\circ}C$  to  $+150^{\circ}C$

The maximum loads are :

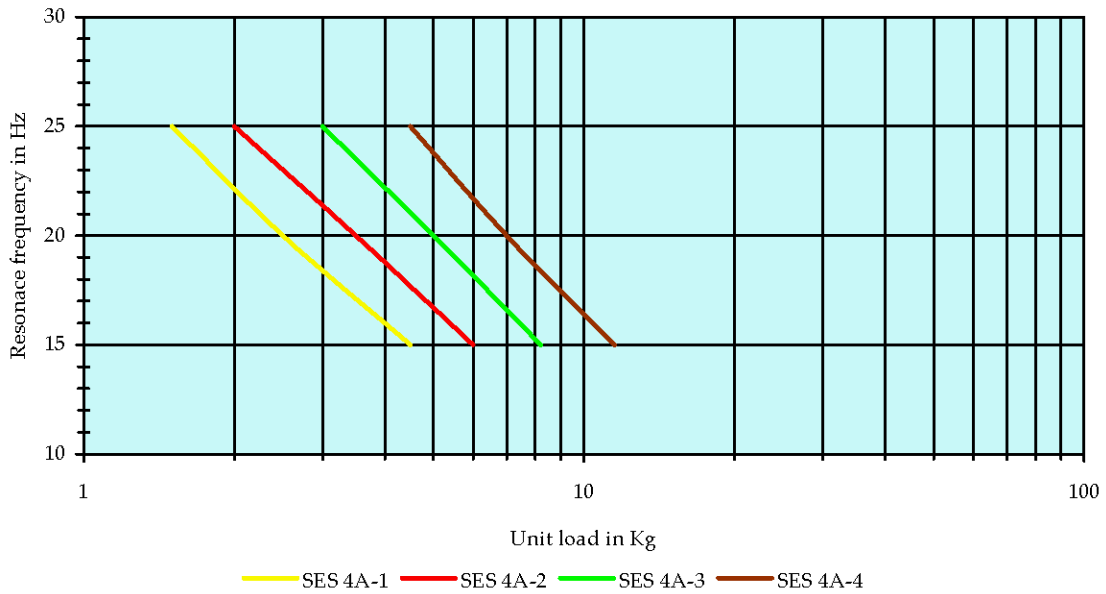
SES 4A-1	SES 4A-2	SES 4A-3	SES 4A-4
4,5 Kg	6,0 Kg	8,2 Kg	11,5 Kg



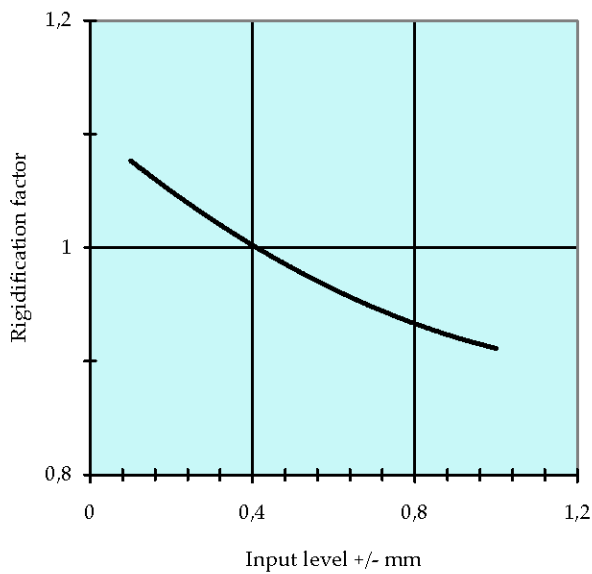
# SES 4 Series



Load range under +/- 0,4mm



Typical dynamic rigidification behaviour



Installation principle

