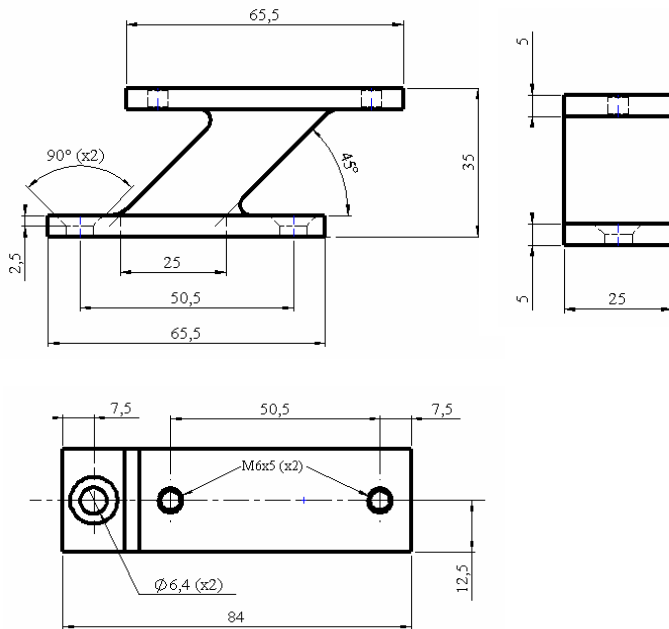
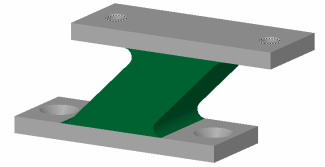


GSC Series



Construction

The GSC series dampers are made of elastomers with high mechanical fatigue properties and elevated damping, allowing to reach a transmissibility at resonance lower than 3 according with loads and input levels ($Q_{max} < 7$)
Approximate weight of damper : 140 grams

Applications

These dampers are mainly intended for the equipment of suspended frames in containers and carrying boxes for transportation

There mounting inside containers is quick and easy

The obtained performances enable to comply with the environment of the different standards for any type of carrier and any type of ground

In a small size they allow to obtain a low frequency insulation and a very good attenuation of shocks and jerks

There is no metallic continuity and this provides a good sound, thermal and electrical insulation

Codification

The reference to be indicated for these dampers is : GSC-[xx] ;

[xx] corresponding to the index of load range

Particular achievements with specific load range can be proposed, for any request, consult our engineering departments

Characteristics

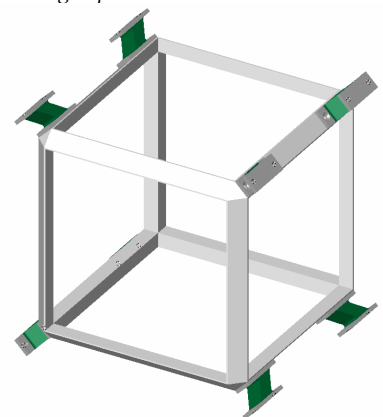
The axial to radial behaviour is about 1.7 to 2.0

The static loading is possible in all attitude

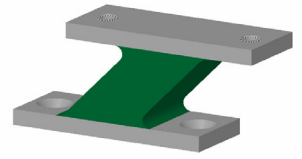
The operative temperature range is from -55°C to $+150^{\circ}\text{C}$

The dampers capacity to accept high displacements in a reduced space taken up, also enable a consequent saving of volume and weight, high displacements of the suspended load with almost identical responses in the 3 axes, and therefore an excellent attenuation of shock and jerks

A mounting, in 45° in all angles, like drawing, is recommended for optimum performances



GSC Series

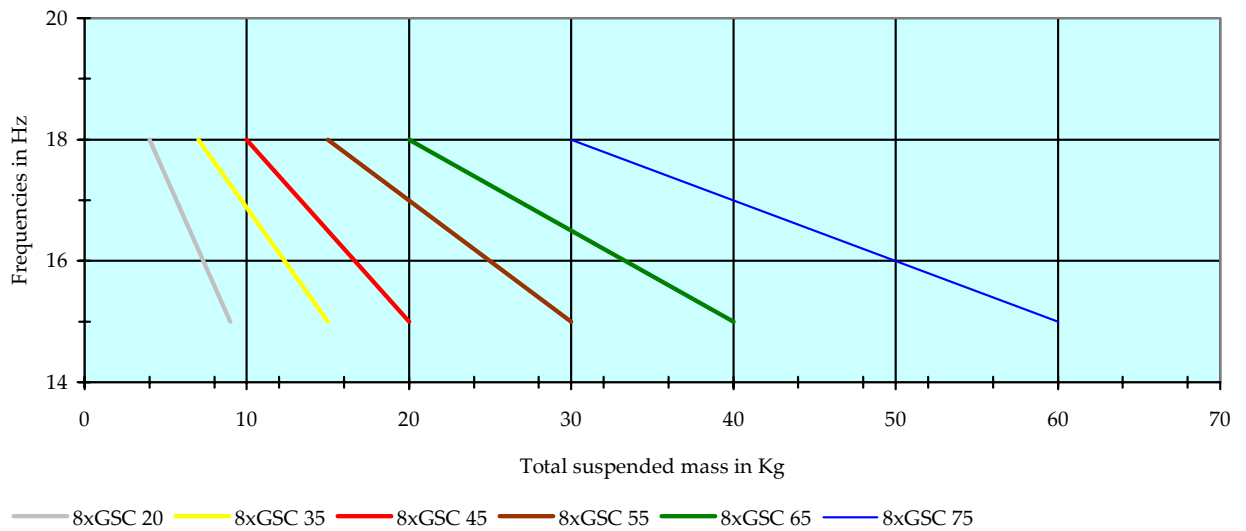


In case of recommended mounting at 45°, the load range is from 4 to 60 Kg with frequencies from 15 to 18 Hz and attenuation of shocks of about 60%

For a sine shape shock level of 30g and duration of 11ms, the output level will be of about 10g with 30mm displacement

The load range could be extended to 120 Kg in case of mounting with 16 dampers instead of 8

Load range with 8 dampers



Typical dynamique rigidification behaviour

