

GAM-TF Series



Construction

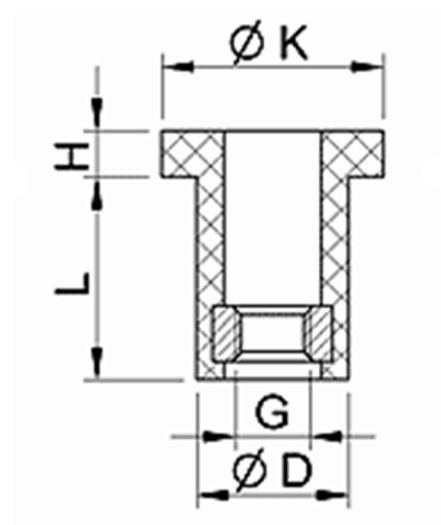
The GAM-TF series dampers are made of elastomers with high mechanical properties
The mechanical parts are made of galvanized steel
Their fixing is easy and allow to use the item in Compression, Shear and mixed Compression-Shear

Codification

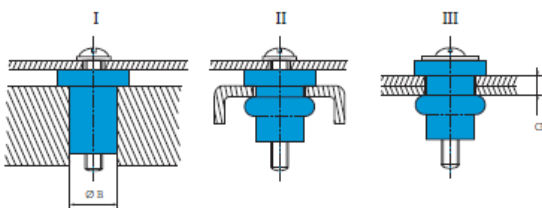
The reference to be indicated for these dampers is at follows:
GAM-TF-[x]
[x] corresponding to the values in table

Dimension (mm)

P/N	G	D	L	H	K
GAM-TF-1	M3	6.6	8.8	3.0	8.8
GAM-TF-2	M4	8.5	12	3.2	12
GAM-TF-3	M5	10.2	14.5	3.5	15
GAM-TF-4	M6	12.0	17	4.3	17.8
GAM-TF-5	M8	16.0	21.8	5.3	23.6



Mounting possibility



Technical Data

P/N	B +/-0.15mm	G in mm	Max Static Load		
			Mounting I	Mounting II & III	
GAM-TF-1	7.35	0.6-2.5	1	5	2.5
GAM-TF-2	9.45	0.8-3.3	1	7	3.5
GAM-TF-3	10.35	0.8-4.3	1.5	10	5
GAM-TF-4	12.85	1.5-5.0	3	14	7
GAM-TF-5	16.65	1.5-6.5	5	28	14
			Compression & Shear	Compression	Shear