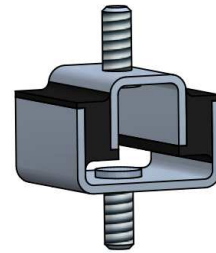


GME-1061 Series

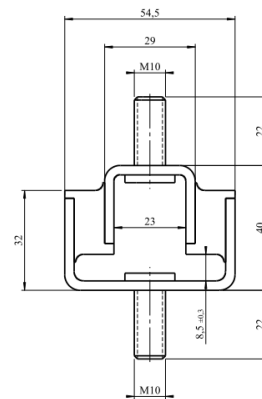
Construction

The GME-1061 series dampers are made of nitrile rubber with high fuel and oil resistance. The metal parts are in steel.
Approximate weight of damper: 260 grams



Applications

The small size of damper with easy fixing device and an ability to work in all attitude authorize the use of this damper in a very large field of industrial application
Insulation of railroad equipment, pumps, motors, machinery, mounted on carrier or on fixed stations, with a good protection against vibration



Codification

The reference to be indicated for these dampers is as follows:
GME-1061-[xx];
[xx] corresponding to the index of load range

Particular achievements can be proposed, for any request, consult our engineering departments

